



Technical Datasheet



1 Product Specifications

Model: KT-LOC-23MM

Dimensions: 23mm x 23mm x 7.2mm

Weight: 20g

Max. Supported Cable Tie: 4.8mm x 1.5mm

2 Performance Data

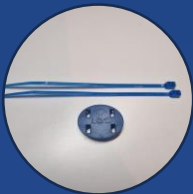
Chip Manufacturer: NXP® Semiconductors

Read/Write Endurance: 100'000 Cycles

Supported Operating Systems: iOS , Android

Encryption: Symmetric Key Cryptography

3 Installation Instructions



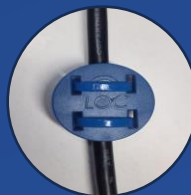
You will require one LOC tag and two compatible Cable Ties



Secure the tag onto the asset by fastening the Cable Ties



Insert the Cable Ties into the LOC tag as shown



Cut the excess off the Cable Ties



Attach the LOC tag to the asset as shown



KelTech IoE
THE NET ZERO NETWORK